

KARIBAN

REFERENCE : K548

SIZES : XS_S_M_L_XL_XXL_3XL_4XL

COMPOSITION :

Main fabric : Polyester / Cotton poplin 65/35 - 105 For white colour 65%polyester / 35%cotton

Main fabric : Polyester / Cotton poplin 65/35 - 110 For colours 65%polyester / 35%cotton

WEIGHT :

Main fabric : 105 gsm

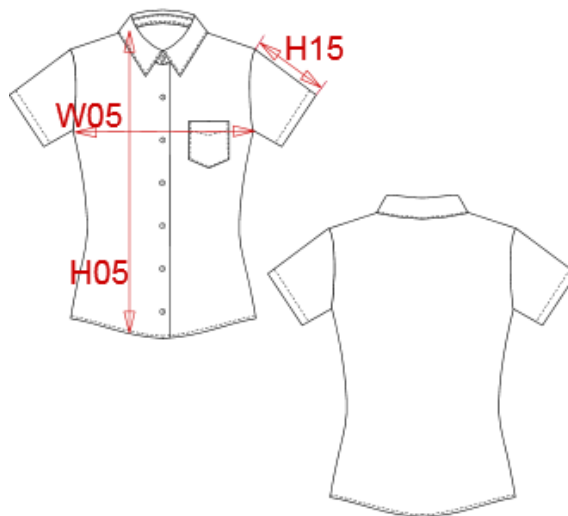
Main fabric : 110 gsm




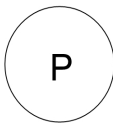
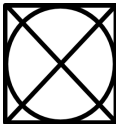
FABRIC CONSTRUCTION AND FINISHING :

Easy Care

ARTICLE WEIGHT :

230 gr/pc



DESCRIPTION											COLORS	PANTONE SERIGRAPHIE
Français : Chemise femme manches courtes											White	White
English : Ladies short sleeve easy care polycotton poplin shirt											Black	Black
Nederlands : Dames blouse met korte mouwen											Navy	296C
Deutsch : Pflegeleichte polycotton damen kurzarm bluse											Classic red	1945C
Español : Camisa de manga corta para mujer											Bright sky	2708C
Italiano : Camicia donna maniche corte policotone popeline											Zinc	447C
Português : Camisa de senhora de manga curta tratamento fácil											Brown	440C
MEASUREMENT											Wine	7645C
Description	XS	S	M	L	XL	XXL	3XL	4XL			Burnt lime	583C
W05 1/2 largeur poitrine/1/2 chest width	46	48	50	53	56	59	62	65			Orange	1585C
H15 Longueur manche sans poignet / Sleeve length without cuff	18,50	19,50	20,50	21,60	22,75	23,85	25	26,10			Silver	2331C
H05 Hauteur totale dos / Back total height	62,65	64,20	66,75	67,70	69,60	71,55	73,45	75,40			Bright turquoise	638C
CARE LABEL											Purple	7447C
    											Forest green	5605C
PACKING											Light royal blue	7685C
Box	12 pcs / box XS => L:52cm W:34cm H:20cm GW:3.20kg NW:1.80kg S => L:52cm W:34cm H:20cm GW:3.30kg NW:1.90kg M => L:52cm W:34cm H:20cm GW:3.40kg NW:2.00kg L => L:52cm W:34cm H:20cm GW:3.50kg NW:2.10kg XL => L:52cm W:34cm H:20cm GW:3.60kg NW:2.20kg XXL => L:52cm W:34cm H:20cm GW:3.70kg NW:2.30kg 3XL => L:52cm W:34cm H:20cm GW:3.80kg NW:2.40kg 4XL => L:52cm W:34cm H:20cm GW:3.90kg NW:2.50kg										Fuchsia	219C
											Kelly green	7727C
											Yellow	1225C